

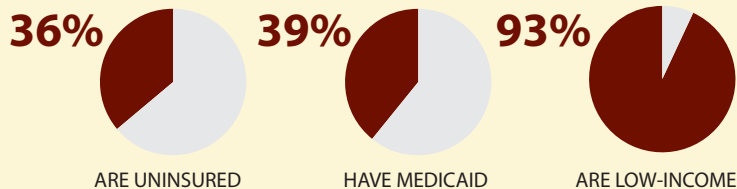
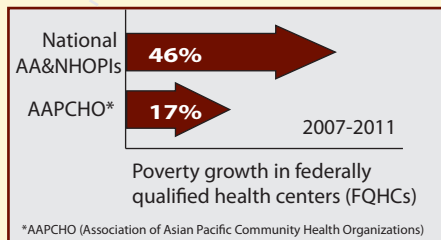


# Health Centers' Role in Reducing Health Disparities Among Asian Americans, Native Hawaiians, and other Pacific Islanders

The nation's network of Community, Migrant, Homeless, and Public Housing Health Centers provides high quality, cost-effective, primary and preventive health care to the medically underserved, regardless of insurance status or ability to pay. Many health center patients are Asian American, Native Hawaiian, and other Pacific Islanders (AA&NHOPIs).

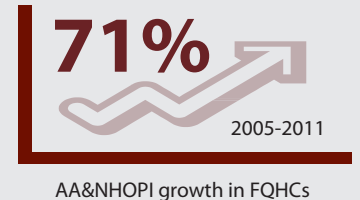
## FQHCs Nationwide

**1,200+** health center organizations serving **20 million** patients



## AA&NHOPI-serving FQHCs

With **760,000+** patients, the AA&NHOPI population is the **2nd fastest growing race/ethnicity group** served at FQHCs



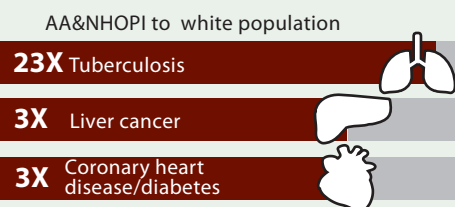
**50%** of AAPCHO patients are best served in a language other than English. AAPCHO centers serve as high as **99% limited English-proficient patients.**

## Disparities among AA&NHOPIs



NHOPIs have **the lowest rate of early prenatal care** in the first trimester among all race/ethnic groups and have **higher infant mortality** than whites.

The only racial/ethnic group whose incidence of breast cancer increased from 2000-2010



Less NHOPIs receive **cholesterol screening** and less Koreans, Filipinos, and South Asians receive **colorectal cancer screening**. Koreans have the **lowest rates of breast and cervical cancer screenings**.

## Health center success in reducing disparities

Rate of low birth weight



Health center patients have **less emergency room** utilization than non-health center patients.



Health centers **improve health outcomes** for AA&NHOPI patients and **lower the cost** of treating chronic illness.



## How Health Centers are Unique and Address Health Disparities



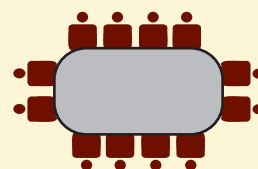
Provide linguistically and culturally appropriate health and "enabling" services



Located in high-need, "medically underserved" areas



Open to all residents, regardless of income



Governed by community boards



Follow rigorous performance and accountability requirements