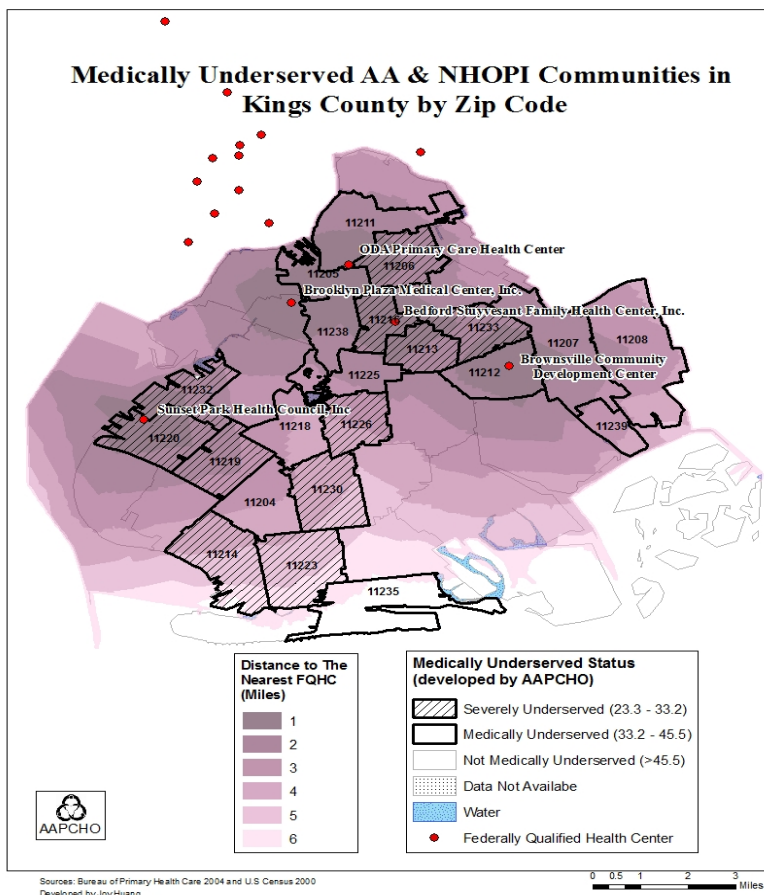


Medically Underserved Asian American and Native Hawaiian and Other Pacific Islander (AA&NHOP) Communities in Kings County, NY – Access to Federally Qualified Health Centers (FQHCs)

The Kings County map displays 38 zip code areas, of which 22 are medically underserved. Kings County, NY was the second most medically underserved county with a MUAC score of 33.7, 1:5,200 PCP/Patient ratio¹, 7.6% or 187,283 AA&NHOPs², 26% AA&NHOP poverty rate, and 60% AA&NHOP limited English proficient (LEP) rate² - the highest among the top five medically underserved counties. Per capita incomes for Asians and NHOPs were \$13,818 and \$12,972, respectively, compared to \$26,156 for non-Hispanic Whites. 76% of AA&NHOPs in Kings County were foreign-born².

As shown in the map, there are five FQHCs across the county along the northern region. However, no FQHC is geographically established in south of Kings County, in which a few zip code areas including 11230, 11223, and 11214 are severely medically underserved. Based on this assessment, additional or expanded health services along southern Kings County need to be considered to ensure health needs are adequately addressed for AA & NHOP underserved populations.



MUAC Definition:

MUAC = AAPI Poverty + AAPI LEP + AAPI Population Size + Physician-to-Patients Ratio

A Medically Underserved AAPI Community (MUAC) is defined as a county in which the AAPI population is underserved in terms of ability to access health care, including facilities and providers. Medical underserved is a function of limited health care resources, financial, language, and cultural barriers, and poor health status.

¹ Bureau of Primary Health Care. Uniform Data System: Calendar Year 2005 Data Report. Washington, DC: Health Resources and Services Administration, 2006.

² U.S. Census Bureau. United States Census 2000. Washington, DC: 2002. Available at: <http://www.census.gov>. Accessed October 24, 2010

For further information, please contact Hui Song at hsong@aapcho.org or 510-272-9536x119