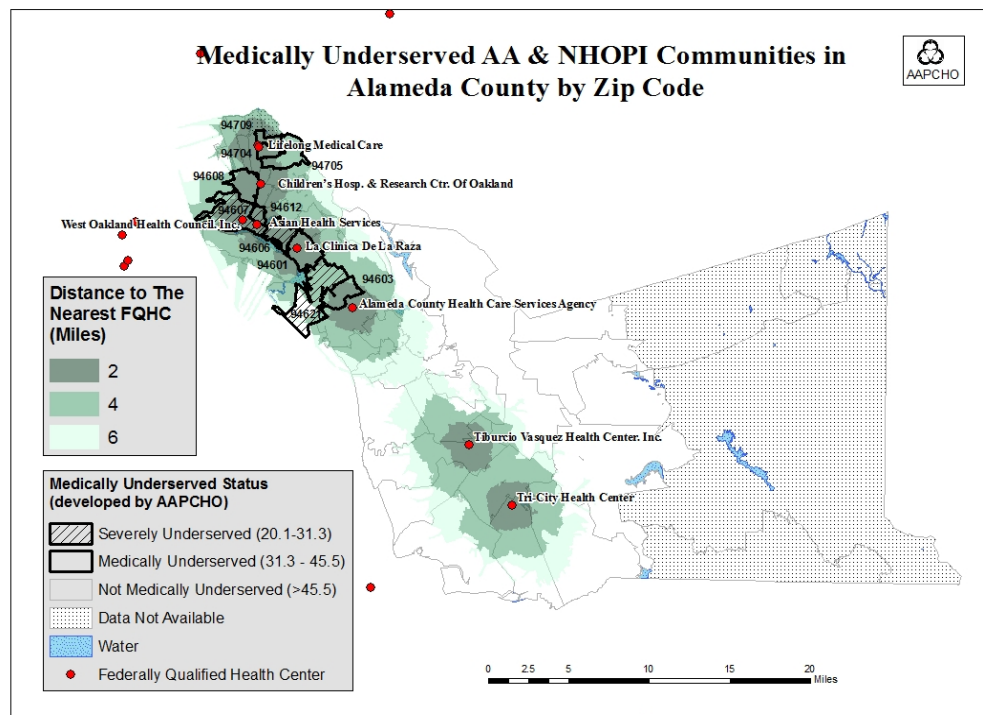


Medically Underserved Asian American and Native Hawaiian and Other Pacific Islander (AA&NHOPI) Communities in Alameda County, CA

– Access to Federally Qualified Health Centers (FQHCs)

The Alameda County map displays 51 zip code areas, of which 10 are medically underserved. Alameda County was identified as a medically underserved area with a MUAC score of 41.3, 1:19,775 PCP/Patient ratios¹, 21.1% or 304,360 AA&NHOPIs², 11.2% AA&NHOPI poverty rate, and 39.6% AA&NHOPI limited English proficient (LEP) rates². Per capita incomes for Asians and NHOPIs were \$24,335 and \$16,584, respectively, compared to \$36,792 for non-Hispanic Whites. 66% of AA&NHOPIs in Alameda County were foreign-born². 10.4% of Asian in Alameda County had no health insurance, compared to 6.3% for non-Hispanic Whites³.

As shown in the map, there are eight FQHCs in Alameda County, six of which are located in the northwestern region. These FQHCs are critical in serving medically underserved AA&NHOPI populations in the area, as they are facing multiple socioeconomic and health disparities. Additional or expanded health services also need to be considered to ensure health needs are adequately addressed for AA&NHOPI underserved populations.



Sources: Bureau of Primary Health Care 2004 and U.S. Census 2000
Developed by Joy Huang

MUAC Definition

MUAC = AAPI Poverty + AAPI LEP + AAPI Population Size + Physician-to-Patients Ratio

A Medically Underserved AAPI Community (MUAC) is defined as a county in which the AAPI population is underserved in terms of ability to access health care, including facilities and providers. Medical underserved is a function of limited health care resources, financial, language, and cultural barriers, and poor health status.

¹ Bureau of Primary Health Care. Uniform Data System: Calendar Year 2005 Data Report. Washington, DC: Health Resources and Services Administration, 2006.

² U.S. Census Bureau. United States Census 2000. Washington, DC: 2002. Available at: <http://www.census.gov>. Accessed October 24, 2010

³ Alameda County Public Health Department. Alameda County Health Status Report 2006. Available at: http://www.acphd.org/AXBYCZ/Admin/DataReports/04_chsr2006-ch1-demo&socialprofile.pdf. Accessed Nov 1, 2010

For further information, please contact Hui Song at hsong@aapcho.org or 510-272-9536x119